



Beaufort County Public Works

Stormwater Infrastructure

Project Summary

Project Summary: Burton Wells Road and Sonya Faye Lane

Narrative Description of Project:

Project improved 6,214 L.F. of drainage system. Cleaned out 798 L.F. of outfall ditch and 5,416 L.F. of roadside ditch. Installed straw mat and hydroseeded for erosion control.

Completion: Jan-11

2011-556 / Burton Wells Road and Sonya	Labor Hours	Labor Cost	Equipment Cost	Material Cost	Contractor Cost	Indirect Cost	Total Cost
AUDIT / Audit Project	3.50	\$71.68	\$0.00	\$0.00	\$0.00	\$0.00	\$71.68
DPTJ / Driveway Pipe - Jetted	20.00	\$428.30	\$221.60	\$62.08	\$0.00	\$0.00	\$711.98
HAUL / Hauling	187.00	\$4,052.30	\$2,488.97	\$599.58	\$0.00	\$0.00	\$7,140.85
HYDR / Hydroseeding	22.00	\$508.54	\$70.28	\$240.70	\$0.00	\$0.00	\$819.52
LM / Loading Materials	5.00	\$113.00	\$148.75	\$26.01	\$0.00	\$0.00	\$287.76
ODCO / Outfall ditch - cleaned out	131.50	\$3,029.27	\$528.72	\$87.57	\$0.00	\$0.00	\$3,645.55
RDCO / Roadside ditch - cleaned out	330.00	\$7,351.55	\$1,054.90	\$313.04	\$0.00	\$0.00	\$8,719.49
RSDCL / Roadside Ditch - Cleanout	178.00	\$4,111.06	\$522.68	\$205.92	\$0.00	\$0.00	\$4,839.66
SC / Sediment Control	61.00	\$1,382.21	\$183.44	\$227.74	\$0.00	\$0.00	\$1,793.39
UTLOC / Utility locates	2.00	\$40.96	\$8.24	\$5.58	\$0.00	\$0.00	\$54.78
Indirect Labor, Services and Supplies	0.00	\$0.00	\$0.00	\$0.00	\$0.00	\$14,542.56	\$14,542.56
2011-556 / Burton Wells Road and Sonya	940.00	\$21,088.86	\$5,227.58	\$1,768.22	\$0.00	\$14,542.56	\$42,627.22
Sub Total							
Grand Total	940.00	\$21,088.86	\$5,227.58	\$1,768.22	\$0.00	\$14,542.56	\$42,627.22

Before



During



After



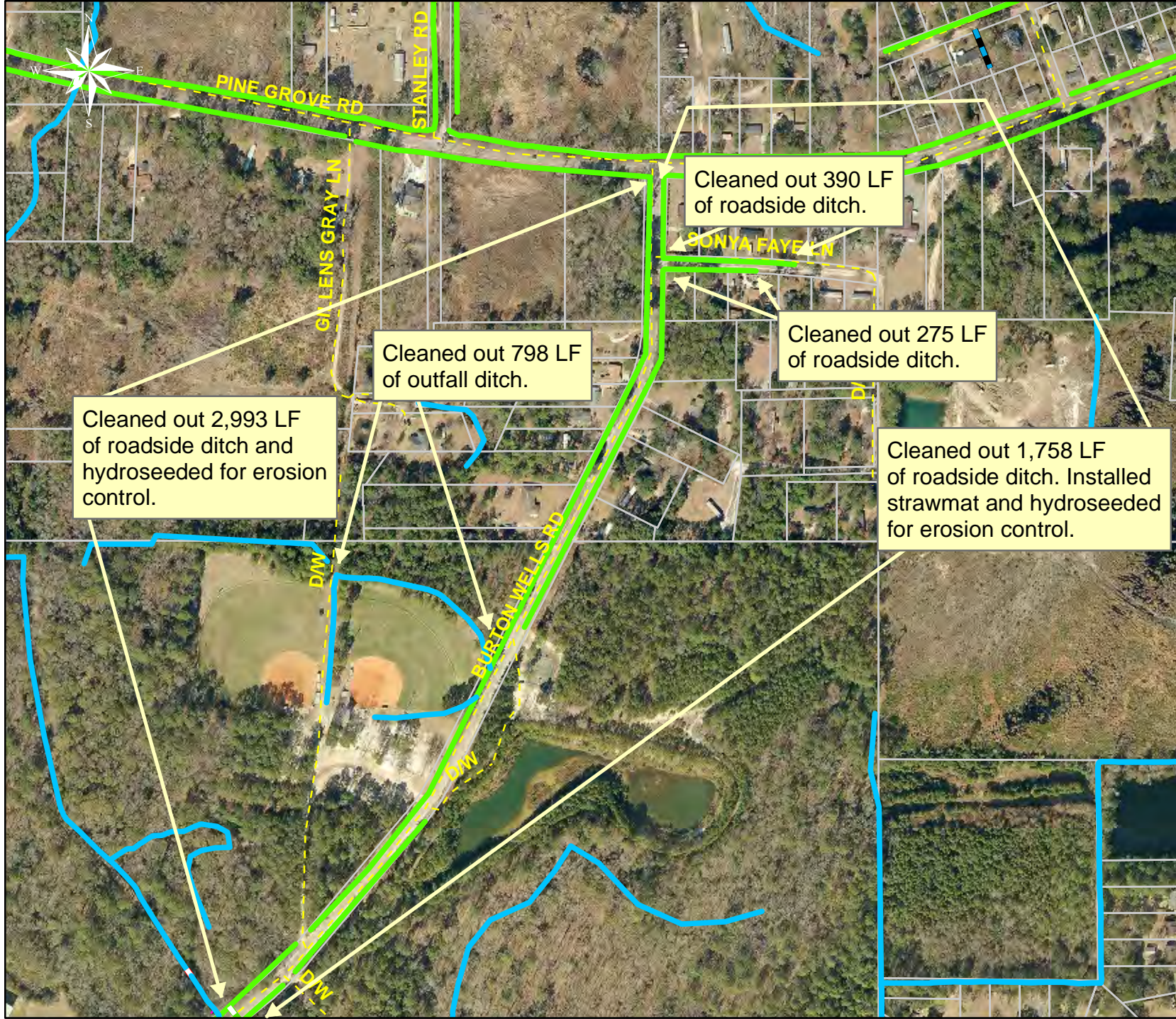
Project: Burton Wells Road and Sonya Faye Lane

Activity: Drainage Maintenance

Project #: 2011-556

Township: Lady's Island

Completed: January 2011



Legend

Drainage Type

- River
- Stream
- Outfall
- Lateral
- Lateral Pipe
- Roadside
- Roadside Pipe
- Road Pipe
- Crossline
- D/W
- Access
- Piped
- Bleeder
- Parcels



1 inch = 412 feet